

Objecting to proposed mast



Application Number: 22/P3469
Comments until: 29-12-2022
Applicant: CK Hutchison Networks (UK) Ltd
Planning Officer: Sarah Muckian

Location: Opposite 195 Stanford Road, Streatham, SW16 4QG

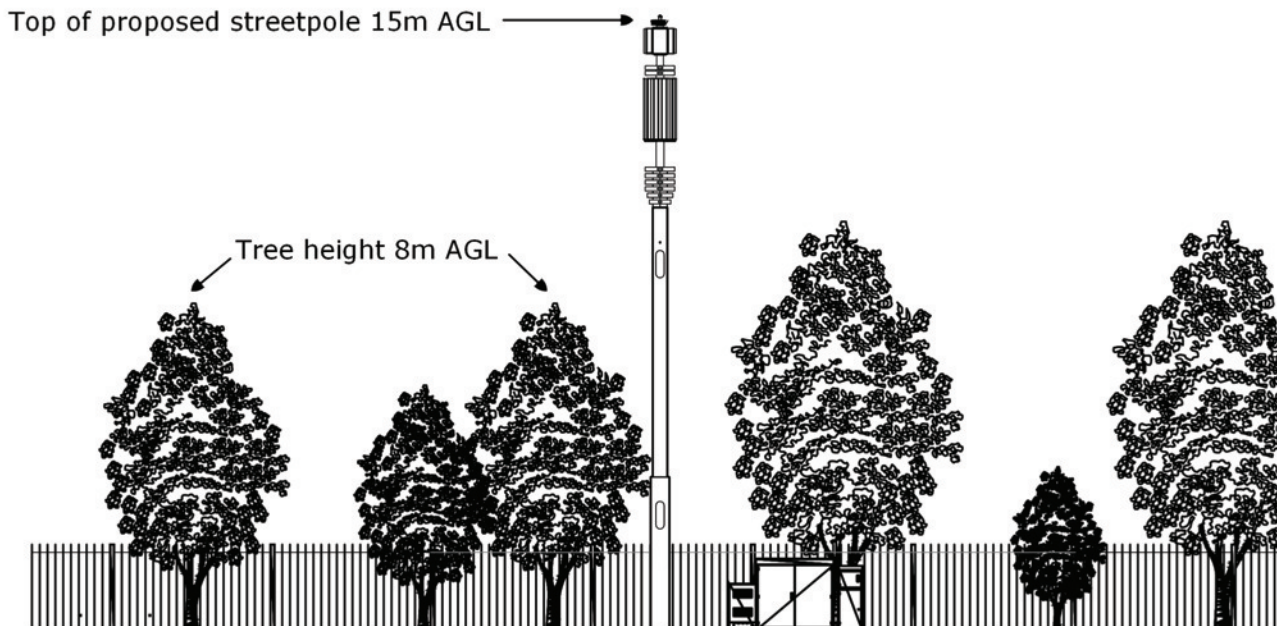
Position on map
<https://tinyurl.com/ye2ywt5b>

Streetview
<https://tinyurl.com/5585vazd>



Proposal: Prior Approval for the proposed installation of a 5G telecoms H3G 15m street pole and x3 ground based equipment cabinets.

To see details go to www.merton.gov.uk/planningexplorer - search for application number 22/P3469. Closing date for objections 29/12/2022 (usually objections can still be submitted a few days after this date)



To object please email : planning.representations@merton.gov.uk

Include the following details:

1. Application number
2. Your name
3. Your address
4. Planning application description
5. Your comments

What can you object about?

For a full application related to a conservation area you can object to siting, appearance, how it would affect the character of the area - includes proximity to residential dwellings, schools, university buildings, residential care homes, nurseries and so on. Ecological harm (e.g. to bees and trees) and health & safety (lack of risk assessment etc) are material planning considerations so can be included as well.

Factors concerning **siting** may involve:

- height of the site in relation to surrounding land
- topography of the site and vegetation
- openness and visibility of the site
- designated areas
- the site in relation to existing masts
- structures or buildings
- proximity to residential property, schools, colleges, universities, care homes
- significant detrimental impact on the historical setting of a listed building

With regard to **appearance** this can include details such as:

- materials
- colour
- design
- dimensions
- overall shape
- solid or open framework
- could also mention disquieting appearance of masts affecting people's enjoyment of the neighbourhood, and possibly leading to anxiety and mental health issues

There are alternatives, fibre to the home is safe, more secure, performs faster and more reliably, it is also less amenable to all pervasive bulk data collection.

Objection points specific to this application

Immediately adjacent to Stanford Playground, and less than 250m from Northborough Park and Playground.

Barely 100m from Stanford Primary School, and less than 400m from Norbury Manor Primary School.

Pedestrian safety - cabinets will be located on a narrow pavement adjacent to a parking area.

Out of character in an area of low-rise residential housing and open greenspace.